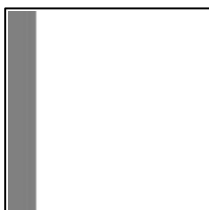


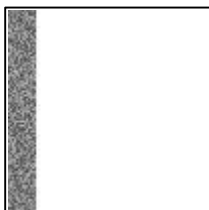


### Andy's Photoshop Tip #40 - Metal Panel

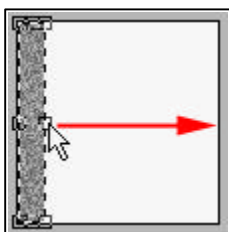
There are hundreds of ways to make an object look like metal. This is one of them.



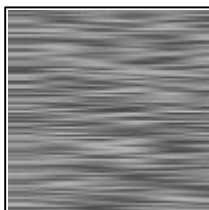
- 1 Create a new image, make a thin rectangular selection like this and fill it with a medium grey color.



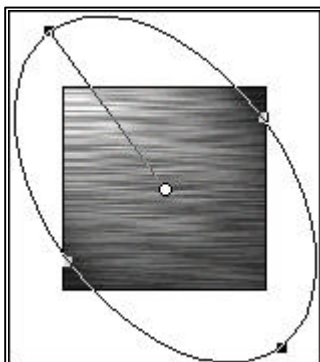
- 2 Now apply the FILTER...NOISE...ADD NOISE with a Monochromatic amount of 50.



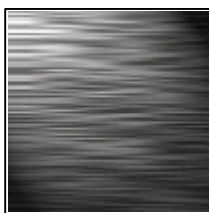
- 3 Click on LAYER...TRANSFORM...SCALE. Now grab the outside-middle handle and drag it past the edge of your canvas. Double-click in the center to apply the scale.



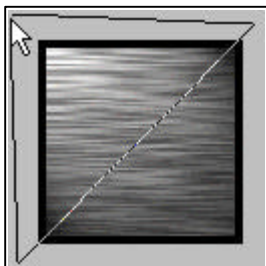
- 4 This is what it should like like now. The longer you pull the scale handle, the thinner the lines are in the metal.



- 5 Now you can use the lighting effects filter to create a hi light in the metal (FILTER...RENDER...LIGHTING EFFECTS).



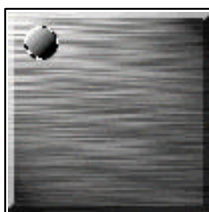
**6** This is what I ended up with after that filter.



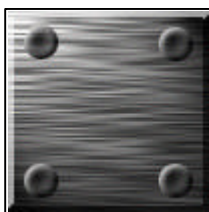
**7** We will now apply the "bevel" look to the metal. Create a new layer and make black your foreground color and then select all (CTRL+A). EDIT...STROKE 3 pixels from the inside, then OK. This will create a black border that is 3 pixels around your image. Now use the Polygon Lasso tool and create a triangle selection for the top half.



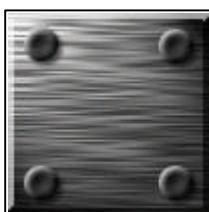
**8** Once it is selected, CTRL+I will invert that piece and make the top corners white. Now hit the number 6 on your keyboard. This will change the opacity of that layer to 60%. This is what your image should now look like.



**9** To make a rivet in your metal sheet, Create a new layer and on that layer make a small circle in the top left corner. Fill it with a white to black gradient from top-left to bottom-right.



**10** Now contract your selection by 3 (SELECT...MODIFY...CONTRACT) and then feather it by 2 ((SHIFT+CTRL+D). Now LAYER...TRANSFORM...ROTATE 180 degrees. Then fill this selection with 50% black. Now that you have your rivet, draw a marquee box around it and then click and drag the rivet to the bottom corner by pressing ALT+CTRL+SHIFT as you drag. This will create a copy of your rivet. Now repeat this step and create two more copies so that all corners have a rivet in them.



**11** To make a drop shadow on your rivets, duplicate the rivet layer by dragging it to the "new layer icon". Now select the bottom layer of rivets and hit CTRL+U for the HUE Adjustments. Move the Saturation Level to -100 and also the Lightness to -100, hit OK. Now do a BLUR...GAUSSIAN BLUR of 1.0 on the whole layer. Now hit "V" and move the layer with your arrow keys 2 pixels to the right and 2 pixels down. There you have it, a metal plate.





---

[Andy's Art Attack!](#) - "Your One Stop Web Design Resource"  
All Artwork & Design © 1995-1998 [Andy Evans](#)